

The METYX logo is rendered in a bold, white, sans-serif font. The 'X' is stylized with two parallel diagonal lines crossing at the center. A registered trademark symbol (®) is positioned to the right of the 'X'. The logo is set against a dark red background that features a diagonal white line running from the top right towards the bottom left. The background image shows a close-up of a CNC machine's cutting tool, a cylindrical end mill, as it precisely machines a metal workpiece. The tool is positioned vertically, and the workpiece is held in a fixture. The scene is illuminated with a strong red light, creating a dramatic, industrial atmosphere. The background image is partially obscured by the red overlay and the diagonal line.

METYX[®]

The text 'TOOLING SERVICES' is displayed in a large, bold, white, sans-serif font. It is centered horizontally and positioned in the lower half of the image. The text is set against a dark red background that features a diagonal white line running from the top right towards the bottom left. The background image shows a close-up of a CNC machine's cutting tool, a cylindrical end mill, as it precisely machines a metal workpiece. The tool is positioned vertically, and the workpiece is held in a fixture. The scene is illuminated with a strong red light, creating a dramatic, industrial atmosphere. The background image is partially obscured by the red overlay and the diagonal line.

**TOOLING
SERVICES**

ABOUT METYX

METYX is a leading global supplier of multiaxial, RTM, woven, vacuum bagging, surface veils reinforcements, plug and mold production, design, lab and engineering, core and fabric kitting services as well as well a local distributor of world-renowned resins, adhesives, chemicals, core materials, equipment, and consumables.

Over 20 years' experience in the composites...

METYX is an ideal solution partner from small to large-scale composites applications for wind energy, marine, automotive, infrastructure, industrial, leisure, and many other industries demanding high standards, know-how and creativity.

For all your needs in composites METYX is here for you!

An impressive portfolio of products and services enables METYX to offer the most complete composite solution on the market. Consult with METYX engineers for your specific needs to speed up your production, reduce the weight, increase the efficiency and/or the performance, and eventually decrease your production costs.



"Our vision has always been to deliver a range of high quality products and services which give our customers a competitive advantage. We are totally committed to meeting the individual needs of our customers with tailor made solutions that add real value."

Uğur Üstünel,
METYX CEO

METYX Plug & Mold Production

METYX is producing plug & mold production in its Manisa, Turkey and Hungary sites. These facilities are set up in response to customer and market needs. It aims to offer design engineering and manufacturing support to customers looking for affordable, high quality tooling solutions.

The METYX tooling team has particular expertise in large scale tooling projects for:

- Wind blade mold components
- Multiple component architectural projects
- Hull and deck plugs and molds for boatbuilding
- Direct negative mold for limited volume parts
- Complex design tooling for automotive & transportation

Tooling Engineering Services & Support

METYX offers engineering support, reverse engineering, rapid prototyping and tooling consultancy using 'state-of-the-art' design and production software, to customers in all industrial market sectors.

Water Heated Epoxy Mould for Wind Blade Component

In response to wind sector customer inquiries, METYX set up a technical project team to develop new capabilities to manufacture and supply heated tooling. The project was a great success, following prototypes and customer trials, and heated epoxy tools are now being manufactured by Tooling Business Unit at the Manisa factory in Turkey.



Master Plug (Pattern) Production

Standard master plugs are typically manufactured using a tooling board or foam-based glass reinforced laminate base, onto which an epoxy or polyester paste is applied. Once set, the paste is then precision

CNC milled to create the final surface before finishing. The last step is the application of a primer and top coat, which is finely sanded and polished to a high gloss surface finish.

Master Plug Making Materials:

- Tooling board
- PU and Epoxy foam
- Polyester and Epoxy paste
- Primer and Top coat

Master Plug Features:

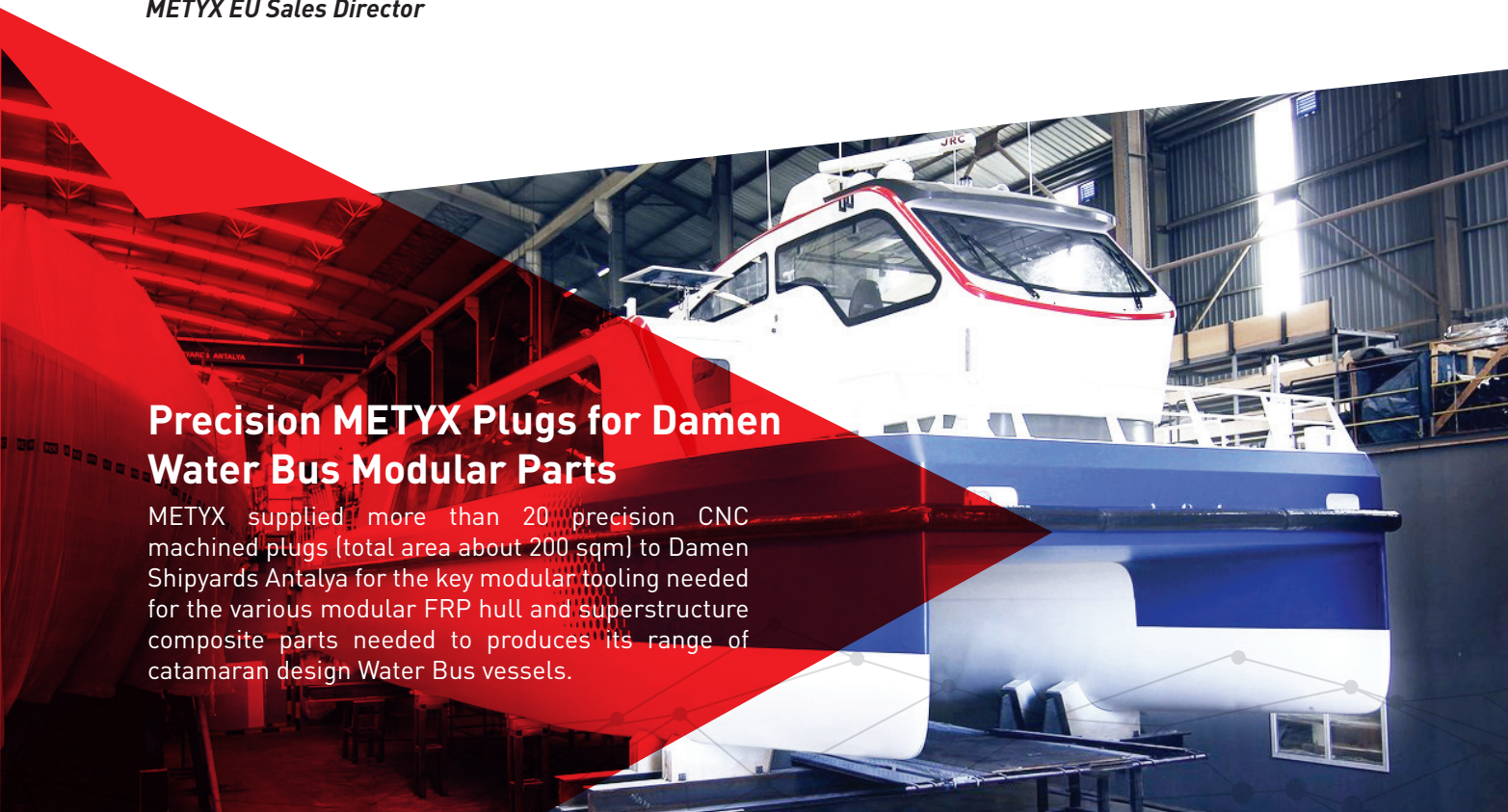
- Shape stability, with 5-axis CNC milled accuracy and finish
- Large plug production capabilities - up to 10m x 6m x 4,5 m
- High gloss polished surface finish
- Modular production of single or multi sectioned plugs
- Double gel coating and post curing to order

“The industry needed a reliable tooling provider, technically able to handle customers’ challenges – rapidly and effectively. This approach triggered our investment decision. We now deliver cost efficient complete tooling solutions, enabling our customers to stay focused on growing their core business”

Bahattin Şendoğan,
METYX EU Sales Director

Precision METYX Plugs for Damen Water Bus Modular Parts

METYX supplied more than 20 precision CNC machined plugs (total area about 200 sqm) to Damen Shipyards Antalya for the key modular tooling needed for the various modular FRP hull and superstructure composite parts needed to produce its range of catamaran design Water Bus vessels.



FRP Mold Tool Production

FRP molds with the required mechanical properties needed for molding finished composite components are produced from the high quality, surface defect

free master plugs. Large scale single and multi-split FRP molds are produced for: hand lay, spray up, RTM, and infusion processes.

Direct Negative Molds

Tooling Centre also produces large-scale molds using a direct molding technique, which is a very cost effective solution for producing prototypes and for one

off or limited run components, especially for projects with a limited budget or tight timescale needed a fast tooling solution.

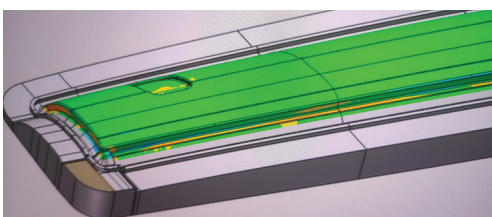
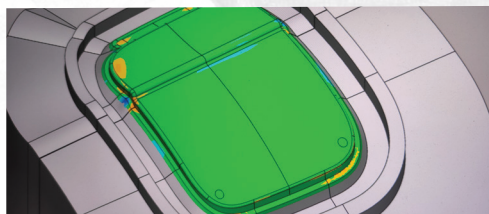
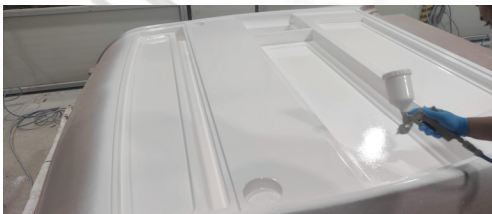
FRP Mold Tool Making Materials:

- Polyester rapid tooling resins
- Epoxy tooling resins
- Vinyl ester and epoxy tooling gelcoats
- Custom reinforcement solutions manufactured by METYX Composites

FRP Mold Tool Features:

- Only quality tooling materials used for high durability
- Mold shell supports as needed for tool life.
- Excellent part production repeatability
- Water based heating system
- Laser scanning
- QC documentation
- Mold commissioning

The METYX Tooling Centre provides customers with a cost effective complete composite tooling solution from **concept to delivery.**



Engine Covers for Automotive Industry
METYX produced engine covers for its automotive customer Onur Fiber.

METYX®

Istanbul Factory

Orhanli Mah.
Gulsum Sok.
No:14 34956 Tuzla
Istanbul/ TÜRKİYE
Tel: +90 216 394 32 60
Fax: +90 216 394 32 58

Manisa Factory 1

MOSB 1.Kisim
Malazgirt Cad.
No:2 45030 Yunusemre
Manisa/TÜRKİYE
Tel: +90 236 302 04 04
Fax: +90 236 302 04 05

Manisa Factory 2

Kecilikoy OSB Mah.
Cumhuriyet Cad.
No:3 45030 Yunusemre
Manisa/TÜRKİYE
Tel: +90 236 302 04 04
Fax: +90 236 302 04 05

USA Factory

2504 Lowell Road
Gastonia
NC 28054
USA
Tel: +1 (704) 824-1030
Fax: +1 (704) 824-1031

Hungary Factory

H-7400 Kaposvár,
Dombóvári
út 3657/135. hrsz.
HUNGARY
Tel: +36 82 510 126
Fax: +36 82 510 127

Logistic Center Mustafa Capra Mah. Kecilikoy OSB Apt. No:15/1 Yunusemre Manisa/TURKEY Tel: +90 236 302 04 04 Fax: +90 236 302 04 05

www.metyx.com | info@metyx.com

